

Toolkit for Donors
Your Partner in Planned Giving Guide



BELIEVE IN TOMORROW.
Leave5.org

an initiative powered by





Introduction

LEAVE 5 PURPOSE

The purpose of Leave 5 is to inspire people to leave at least 5% of their estate to the local charitable causes they care about, in order to build more prosperous communities.

As you'll see in this toolkit, if everyone in the Abilene region left even a little money to their favorite organizations, that's a few hundred million dollars of impact!

RESOURCES FOR DONORS

Choosing a charitable beneficiary of your planned gift(s) and what type of gift you will make are big decisions. This toolkit provides resources to guide you through some of the options, all to help you maximize your charitable impact and legacy.

If you have any questions at all, please contact Katie Alford, President/CEO of the Community Foundation of Abilene, at kalford@cfabilene.org or 325-676-3883. Katie will be happy to talk through your charitable giving goals with you.

MAKING THE PLEDGE

Once you are ready to make the commitment to leave at least 5% of your estate to charity, be sure to notify the charity you've selected, then go to leave5.org and make the pledge. You will have the option to allow your name to be publicly displayed, or you can make the pledge anonymously.

leave5.org





About the Community Foundation



You can choose to leave a portion of your estate to any charity you choose.

For a list of nonprofits, please go to leave5.org. You can either leave your gift directly to a nonprofit organization(s), establish an endowment fund at the Community Foundation of Abilene, or give to an existing fund at CFA.

The following pages share some information about how CFA can help you make a *lasting* impact on the causes that are meaningful to you.

Our Mission

The Community Foundation of Abilene empowers people to make a *lasting* charitable impact on our community.

We connect donors to causes they care about, manage strategic investments to preserve our endowments, make grants that align with donor intent, respond to community needs, and provide philanthropic leadership to enhance Abilene's future, today.

Our Vision

A thriving Abilene, endowed forever.

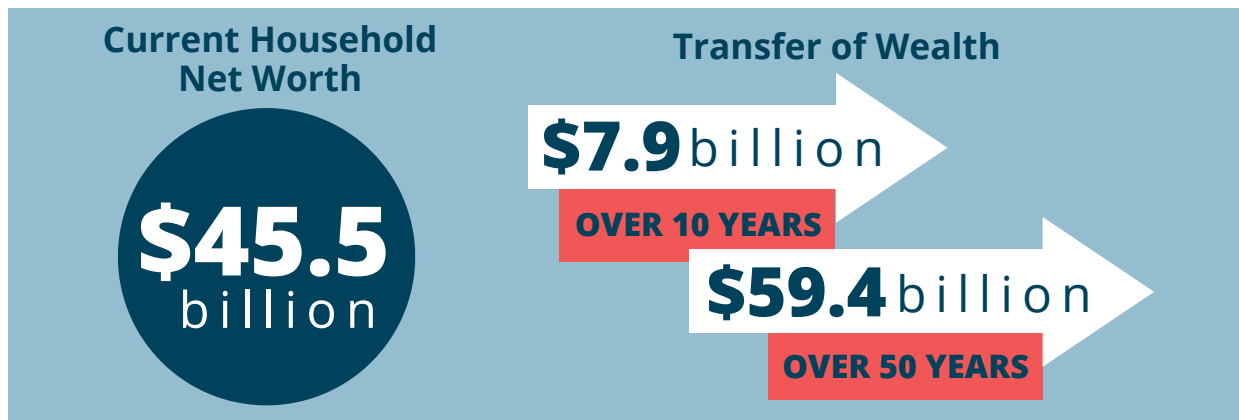




Transfer of Wealth Study

How do you hope your community will look in the next 10 years? What about 50 years? In the next decade, Abilene will experience a transfer of wealth from one generation to the next. Our community has the opportunity to make lasting charitable impact through philanthropic investing.

In 2019, the Community Foundation of Abilene partnered with LOCUS Impact Investing to conduct a Transfer of Wealth Opportunity Analysis for our five-county region (Taylor, Nolan, Runnels, Shackelford and Coleman). This study provides an estimate of our region's assets – homes, businesses, and investments – that will transfer between generations within the next 10 and 50 years. The results are shown below. Want to see the whole report? Visit: leave5.org/why-and-how



Think of the impact.

Capturing **just 5%** of the 10-year transfer potential could create **\$395 million** in new endowments. Over 20 years, this endowment could support average annual grantmaking of nearly...

\$22 million

Distributing **just 4%** of those new endowed assets locally for impact over 20 years would generate significant grantmaking support for programs that enhance workforce, housing, literacy, arts, feeding, education and more.





Types of Gifts

Leave a legacy that lives on.

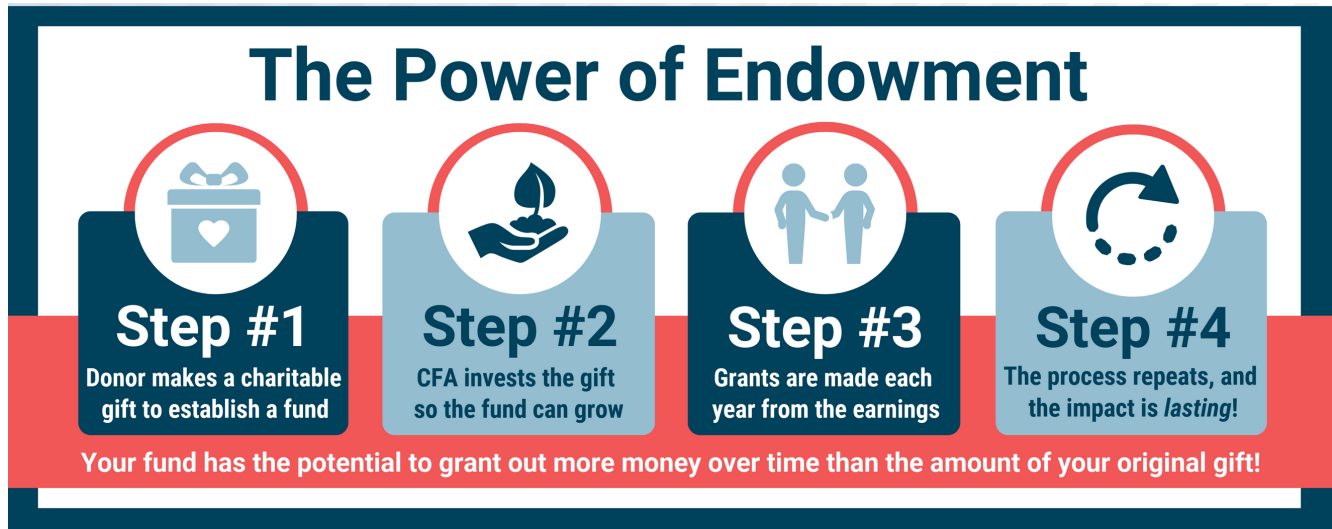
Planned giving is a process that allows donors to plan a significant charitable gift after their death as part of their legacy. Almost anyone can leave 5% of whatever they have at the end of their lives to causes that have been important to them. Including a charitable gift in your will or by beneficiary designation are simple and feasible ways to support your favorite causes while not affecting your current financial security. You can help shape this community.

Gift Type	Description	Benefit to Donors	Candidates for this Option
Charitable Remainder Trust	<ul style="list-style-type: none">• A gift of cash, stock, real estate or complex assets in return for variable payments• Upon passing, remainder is distributed to the charity• Donor can make additional contributions over time	<ul style="list-style-type: none">• Annual income that can adjust over time• May avoid capital gains taxes on appreciated assets• Income tax charitable deduction in year of gift	Good for real estate and complex or appreciated assets
Retained Life Estate	A gift of house and/or property	<ul style="list-style-type: none">• Income tax charitable deduction in year of gift• Donor can continue to live in or use property	Older donors who own their own homes (including vacation homes)
Bequest	Gift of any amount through a will, trust, life insurance policy or IRA	Estate benefits	Donors of any age or income level
Life Insurance	Gift can be made from existing policies, or donor may take out new policy to benefit charity	May provide a current income tax deduction and estate tax deduction	Donors of any age or income level





Fund Types Offered by CFA



Designated Funds - These funds establish a lasting source of income for a specific nonprofit organization. Each year the designated nonprofit receives a grant paid out from the fund.

Unrestricted Funds - Unrestricted funds give CFA the flexibility to respond to emerging needs in our community. We have two discretionary grant cycles each year when nonprofits can apply for grants generated by unrestricted funds. The CFA grant committee decides which grants to award through these cycles.

Field of interest Funds - These funds are for donors passionate about a specific type of cause, such as education, children and youth, healthcare, arts, etc. Nonprofits serving that specified cause can apply for grants from field of interest funds each year.

Scholarship Funds - Grants from these funds provide college scholarships for area students. Scholarship funds are often established to honor the donor or a loved one. The donor gets to establish the qualifying criteria for scholarships awarded from the fund.

Donor-Advised Funds - This type of fund gives your family, or whomever you designate as the fund advisor, the flexibility to recommend which nonprofits receive grants from this fund throughout the year. This is a great way for your family or friends to continue being charitable for generations. You can choose an advisor(s) to make grant recommendations after you've passed away.





Designated Funds

These funds establish a lasting source of income for a specific nonprofit organization. Each year the designated nonprofit receives a grant paid out from the fund.



Gay and Seymour Beitscher at the Philharmonic Ball, circa 1980

The Beitschers & the Abilene Philharmonic Association

Gay Beitscher loves the Abilene Philharmonic.

"In addition to the lovely music, we enjoy dressing up and getting a chance to visit with people we know."

Years ago, Gay and husband Seymour established a designated fund to benefit the Philharmonic, making grants to the organization each year.



Designated funds through the Community Foundation of Abilene are vital to the continued success and stability of the Abilene Philharmonic."

- Kevin Smith, Abilene Philharmonic Executive Director



Amber Cree at the Abilene Zoo

The Cree Legacy Lives On

Amber and Bill Cree were passionate about the Abilene Zoo. The Crees chose CFA as the beneficiary of their charitable remainder unitrust (CRUT), establishing the Amber and Bill Cree Designated Endowment.

This fund distributes grants annually to the Grover Nelson Park Zoological Foundation and Hendrick Home for Children, two organizations for which Amber spent 38 years serving as a volunteer and board member.



Unrestricted Funds

Unrestricted funds give CFA the flexibility to respond to emerging needs in our community. We have two discretionary grant cycles each year when nonprofits can apply for grants generated by unrestricted funds. The CFA grant committee decides which grants to award through these cycles.

James's Story

Disability led James to become jobless, then homeless. He turned to Abilene Hope Haven, a local nonprofit that provides temporary shelter to people living with homelessness and connects them to housing and tools to lead a sustainable life.

CFA provided a \$25,000 grant to support Abilene Hope Haven's shelter during a discretionary grant cycle, funding that made it possible for people like James to find a place to call home and a path to sustainability.

Donors who establish unrestricted funds make it possible for us to respond to these types of community needs and make grants to a wide range of causes.



"Just knowing that you have a place to come back to that is yours, it means so much... I thank all of y'all that have given me the chance to rebuild my life." - James



"It is phenomenal to have the Community Foundation invest in us to be better nonprofit organizations and serve the community better."
- Cynthia Pearson, Day Nursery of Abilene President/CEO

Day Nursery of Abilene's Story

Day Nursery of Abilene is a great example of a nonprofit that has received grants through CFA's discretionary grant cycles and used the funding to make a positive impact.

Grants to Day Nursery over the years have provided funding for a new gymnasium, pre-k curriculum, security enhancements, new cribs to keep children safe, and more.

These grants have helped the organization to better carry out its mission to provide affordable, quality child care to a diverse community.



Field of Interest Funds

These funds are for donors passionate about a specific type of cause, such as education, children and youth, healthcare, arts, etc. Nonprofits serving that specified cause can apply for grants from Field of Interest funds each year.



Pat Meleen Vaughn Fund for Humane Treatment of Animals

Pat's charitable passions continue to make an impact today because of the funds she established from her estate.

She left gifts to establish two funds in her name. One of these funds is the Pat Meleen Vaughn Fund for Humane Treatment of Animals. Grants from this fund are made each year to local nonprofits serving animals.

The Taylor-Jones Humane Society has received grants from this field of interest fund to help neglected and injured animals like the one pictured to the right. This little dog was hit by a car, and the humane society took him in and treated his injuries.

This is the type of lasting impact you can make on the causes you're passionate about when you establish a Field of Interest fund.



With the help of caring hearts, dogs like these get the medical help they need so they may find their forever homes."

- Melissa O'Neill, TJHS



Good morning,
To who ever gets this note,
Thank you for providing us with a place to stay, eat and having caring staff, you're the reason that I believe someone cares.

This heartwarming note was written by one of the children served by New Horizons.

APC Endowment Fund for Mental Health

New Horizons, a nonprofit that provides a home for displaced children, received a \$15,000 grant from the APC Endowment Fund for Mental Health. This fund was established by community leaders to make grants supporting mental health initiatives in our community.



Scholarship Funds

Grants from these funds provide college scholarships for area students. Scholarship funds are often established to honor the donor or a loved one. The donor gets to establish the qualifying criteria for scholarships awarded from the fund.



Honoring a Father's Legacy

Dr. Jennifer Shewmaker is an ACU professor who established a scholarship fund to honor the memory of her late father and his passion for Christian education. The Harold D. Wade Memorial Scholarship is for graduating seniors who plan to attend a Christian college or university.



"It seemed only fitting to honor his memory and legacy by finding a way to continue his work of changing lives through Christian education..."
- Dr. Jennifer Shewmaker

Leo & Piney Scott Scholarship

Dr. Leo and Piney Scott were passionate about education. Dr. Scott was a longtime minister, and Piney was a local educator.

They established the Leo and Piney Scott Scholarship, which primarily awards college scholarships to African-American students who are active in a church that is part of the Greater Abilene Ministerial Alliance (GAMA).

Dr. Scott was also heavily involved in establishing the GAMA Scholarship at CFA.



See a video about the Scotts' impact at cfabilene.org/blackhistory.



Donor-Advised Funds

This type of fund gives your family, or whomever you designate as the fund advisor, the flexibility to recommend which nonprofits receive grants from this fund throughout the year. This is a great way for your family or friends to continue being charitable for generations. You can choose an advisor(s) to make grant recommendations after you've passed away.



Peggy Beckham poses with her children and their spouses at the 2019 CFA Annual Luncheon.

Read about why Carolyn and John Beckham work with CFA at cfabilene.org/john-beckham.

The Beckham Family

Charitable giving is a family affair for the Beckham family. Peggy Beckham has used her donor-advised fund for decades, recommending grants throughout each year to support a wide range of causes that interest her. Her children have followed her footsteps, establishing their own donor-advised funds.



As shown in the financials, for its history the CFA has exhibited a solid return on the funds it has received. It is not just a community savings account, but an investment account that grows and multiplies the original gift, maximizing the impact in our community. - John Beckham

The Denny Family

Mike and Julie Denny have a donor-advised fund at CFA. Inspired by their granddaughter Caroline's journey battling cancer, the Dennys have recommended grants from their fund to Make-A-Wish, supporting wishes for kids like Brady Bradshaw.

Brady got his wish to swim with sharks at Disney World, and the Denny family later got a chance to meet Brady at the Abilene Zoo to see firsthand the impact of grants from their fund.



Brady and Caroline (middle) pose with their families at the Abilene Zoo.



Contact Us

How can we help you make a *lasting* charitable impact on your community?

**Believe in tomorrow.
Make the pledge today.**

leave5.org



We're here for you, even if it's just to talk about your charitable interests.
Contact us any time.

cfa@cfabilene.org • 325-676-3883 • cfabilene.org

